

MONTHLY MEMBERSHIP PROGRESS REPORT

LOCATION PAKISTAN

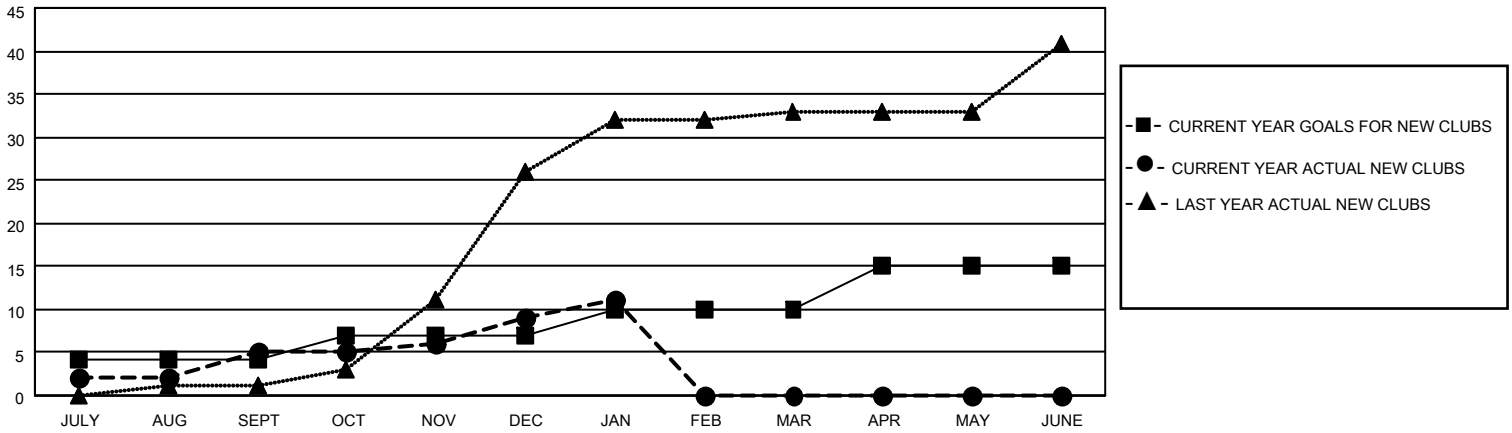
District 305 N2

Results as of: 1/31/2022

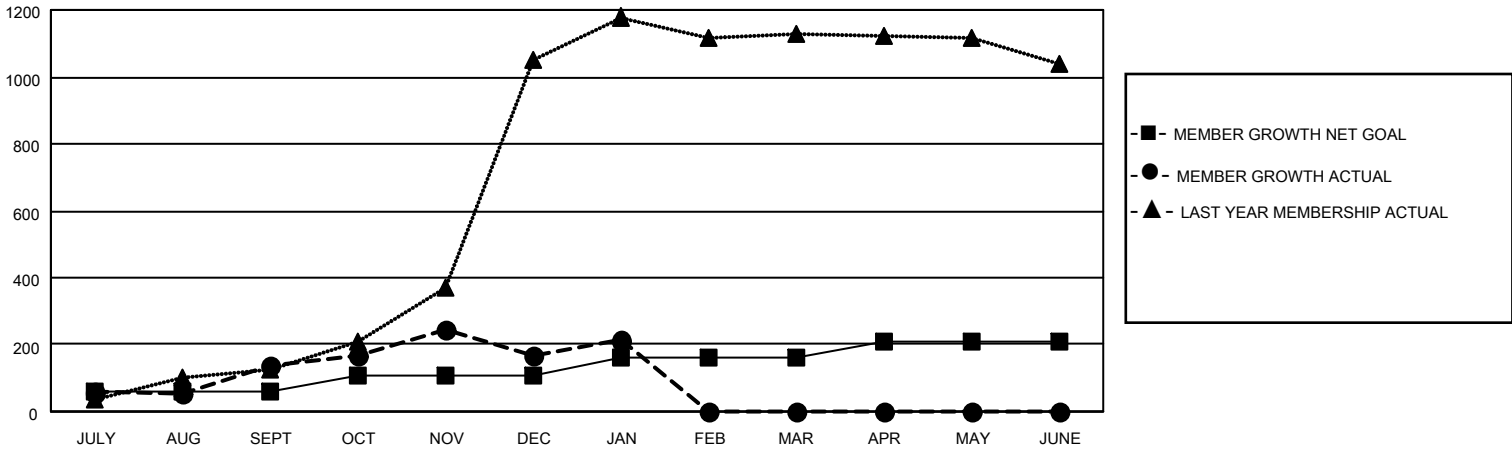
Clubs			
RESULTS FOR 2021-2022			
QUARTER	NEW CLUB GOAL	NEW CLUBS	DROPPED CLUBS
JULY/AUG/SEPT	4	5	2
OCT/NOV/DEC	3	4	2
JAN/FEB/MAR	3	2	0
APR/MAY/JUNE	5	0	0

Members			
RESULTS FOR 2021-2022			
QUARTER	MEMBER GROWTH NET GOAL	MEMBER GROWTH ACTUAL	DROPPED MEMBERS ACTUAL (including transfers)
JULY/AUG/SEPT	60	191	41
OCT/NOV/DEC	50	240	201
JAN/FEB/MAR	50	87	39
APR/MAY/JUNE	50	0	0

GOALS AND ACTUAL NEW CLUBS CUMULATIVE



GOALS AND ACTUAL MEMBERS CUMULATIVE



DROPPED CLUBS: 4

56 CLUBS OF 138 ADDED 1 OR MORE NEW MEMBERS

GENDER DISTRIBUTION

MALE	2,677 (76.05%)
FEMALE	843 (23.95%)
NON BINARY	0 (0.00%)
PREFER NOT TO ANSWER	0 (0.00%)

DROPPED MEMBERS

[CLICK HERE FOR CUMULATIVE MEMBERSHIP DATA](#)

DECEASED	2
CLUB CANCELLED	27
OTHER	252
TOTAL	281

TOTAL FAMILY UNIT MEMBERS 3,258

FAMILY MEMBERS PAYING HALF DUES 2,523